



SINGER®

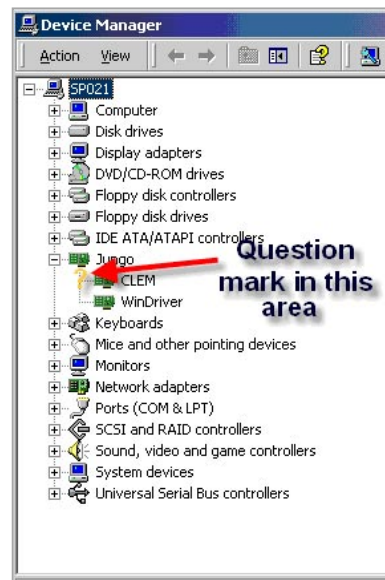
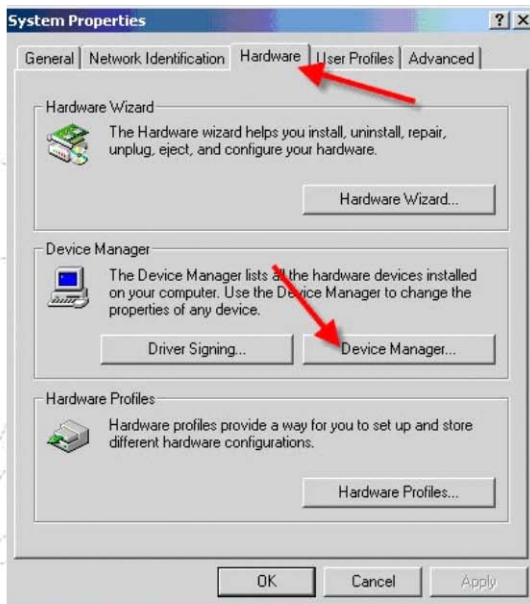
SINGER® FUTURA™ Sewing & Embroidery Machine

I am not able to install the drivers for my Futura?

To install the CLEM driver you will need to right click on My Computer. MAKE SURE THAT YOU HAVE THE BASE FUTURA CD IN THE TRAY when starting this process.

Then left click on Properties. From the Properties Dialog box select Hardware > Device Manager

In the Device Manager will be a list of devices on your computer. You will need to look for JUNGO. There should be a yellow question mark near this.



Double left click on the question mark and it should open up the Add New Hardware Wizard or Update Drivers. Just follow the prompts and answer the questions. It will probably ask if you want to reinstall the Drivers. Click yes.