

add-on  
**PhotoStitch**<sup>®</sup>



**User's Manual**



## Inside Photostitch

**Photostitch** was designed to “**simulate**” an image using special stitch techniques. This type of embroidery design is not the “traditional” (that includes primarily **fills and satin columns**) variety. These stitch techniques require virtually **no digitizing skill** and very little labor. Photostitch has a **Wizard** that walks you through a step-by-step process for creating an **automatic** embroidery design. In this segment, each step and process will be defined.

### Open Wizard

Step	Action	Result
>1	Select <b>Photostitch...</b> from the <b>Create</b> drop-down menu.	Photostitch Wizard/ Introduction page will open.
>2	Click <b>Next</b> .	

#### >1: Open Image

This is the step to choose the image, or artwork to be used with **Photostitch**. It is important to use a clean image for this process. If the image was **scanned**, it is a Bitmap type (millions of pixels) image – either **.bmp** or **.jpg**, and must have a reasonably “high resolution”. **150-300 DPI** is good.

Step	Action	Result
>1	Choose the <b>Select</b> from the Select Image box.	The Open Image File box will open.
>2	Choose <b>Image</b> (of your choice) from the folder where your image is stored.	
>3	Click <b>Next</b> .	

## >2: Photostitch

This 2nd step was designed to offer a variety of options as to how PhotoStitch will simulate an image.

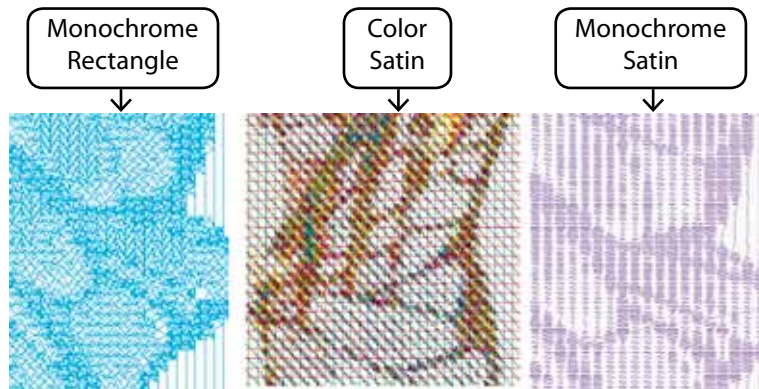
There are three different PhotoStitch fill types : Satin, Rectangular and the 'Running' fill type.

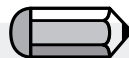
Specifically for rectangular and satin, there are two options for color: Monochrome (one color), or Color Fill (this uses Cyan, Magenta, Yellow, and Black – in that order).

The different fill types allow for variations on the effect and the result generated, to get the best result out of any selected photo, while at the same time also choosing the fill type which will ensure a relatively low stitch count.

Selection of the PhotoStitch fill type is thus a balance amongst the desired fill effect and the resulting stitch count.

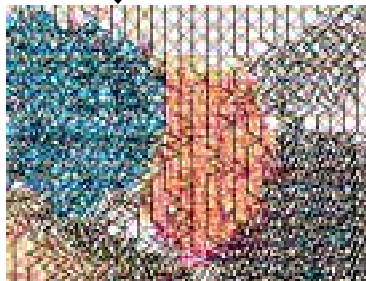
See images below for visual reference of the various PhotoStitch fill types.



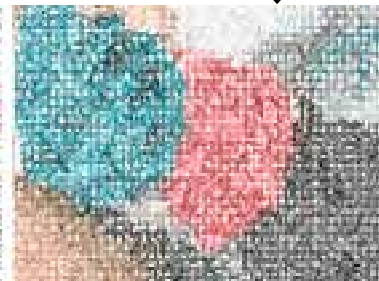


The 'Running' PhotoStitch fill type can only work with in multiple colors and not as monochrome.

Color  
Rectangle



Running



The 'Running' PhotoStitch fill type does only allow rectangular crop.

### >3: Crop Image

In this step the Wizard is supplying the option to **Crop** (cut) the **Image**. Though it is not necessary to crop, there may be some areas that are not desired in the embroidery design. Also, in this step, is the option to define the shape of the image as **circular** or **rectangular**.

Step	Action	Result
>1	Click on <b>square</b> on the frame around image.	
>2	Drag <b>square</b> to <b>Crop</b> .	
>3	Click <b>Next</b> .	

### Circular or Rectangular

Step	Action	Result
>1	Check <b>Circular</b> in the selection box.	The image will be defined (and "cropped") as a Circle.
	<b>or</b>	
>1	Check <b>Rectangular</b> in the selection box.	The image will be defined (and "cropped") as a Rectangle.
>2	Click <b>Next</b> .	

### Polygonal

Selecting '**Polygonal**' will allow you to crop and select a specific area on the image. Simply clicking on the image will input points which define the area to be cropped. You can input as many points required to exactly select the desired area.

#### >4: Set Dimensions

The 4<sup>th</sup> step is your chance to change the **Dimensions** or size of the image.

Step	Action	Result
>1	Click <b>Width</b> (or <b>Height</b> ) box.	
>2	Type <b>new value</b> .	<b>Both</b> dimensions will change at once.
>3	Click <b>Next</b> .	



#### Tip!

Try using Photostitch **as large as possible**. You may find that you get "more bang for your buck" (larger embroidery for similar stitch "costs").

#### >5: Color Refinement

In this step, the software is offering the options of altering the **Brightness** and **Contrast** of the image. Since the software is "looking at" the image in order to simulate a "likeness", it is important to have a lot of light, and contrast. **Experimentation is key.**

Step	Action	Result
>1	Move <b>slide bar</b> until image is brighter (if necessary).	
>2	Move <b>slide bar</b> until image has more contrast (if necessary).	
>3	Click <b>Next</b> .	



It is possible to **change the Unit** (of measurement) from **CM** to **MM** or **Inches** in the "**Units**" box.



While working with the slide bars, look at the image on the right-hand side of the box. It is possible to "Pan" the image in the small screen on the right-hand side of the **dialogue** box. Simply **right-click** and **drag** the image.



1. It is possible to “Pan” the image in the small screen on the right-hand side of the **dialogue** box. Simply **right-click** and **drag** the image.

2. It is also possible to **delete** segments that you do not want to be digitized. Simply highlight the color in the Suggested Colors box, and select **Remove**.

### >6: Color Reduction

This step provides the option to reduce the colors of the photo, it is only available for the ‘Running’ fill type.

Step	Action	Result
>1	Check <b>Reduce Colors Automatically</b> in the Color set suggestion box.	
>2	Click <b>Suggest</b> .	The Wizard will look at the image and suggest some colors.
	<b>or</b>	
>1	Check <b>Reduce Colors to</b> and Type in <b>number of desired (thread) colors</b> .	
>2	Click <b>Suggest</b> .	The Wizard will look at the image and suggest (the amount entered) colors.
>3	Click <b>Next</b> .	

#### **Attention!**

For ‘Rectangular’ and ‘Satin’ fill type, please skip this part and move to the next step.

It is only available for the ‘Running’ PhotoStitch fill type.

**>7: Set Properties**

This final step will allow you to set the settings the various techniques will use to fill the photo with stitches.

As every fill type has its own unique style to fill the photo with stitches, different parameters are available to apply.

**Rectangular Fill Type**

Step	Action	Result
>1	Select <b>Rectangle Size</b> in Parameters box.	
>2	Click on 'Finish' to generate the embroidery design.	

**Satin Fill Type**

Step	Action	Result
>1	Select <b>Satin width</b> in Parameters box.	
>2	Select <b>Resolution step</b> in Parameters box.	
>3	Select <b>Minimum stitch distance</b> in Parameters box.	
>4	Click on 'Finish' to generate the embroidery design.	

**Running Fill Type**

Step	Action	Result
>1	Select <b>Density</b> in Parameters box.	
>2	Click on 'Finish' to generate the embroidery design.	

The **Default** values in the **Photostitch Wizard** work very well in most instances. **Experiment** and then adjust some of the parameters for **different effects**.



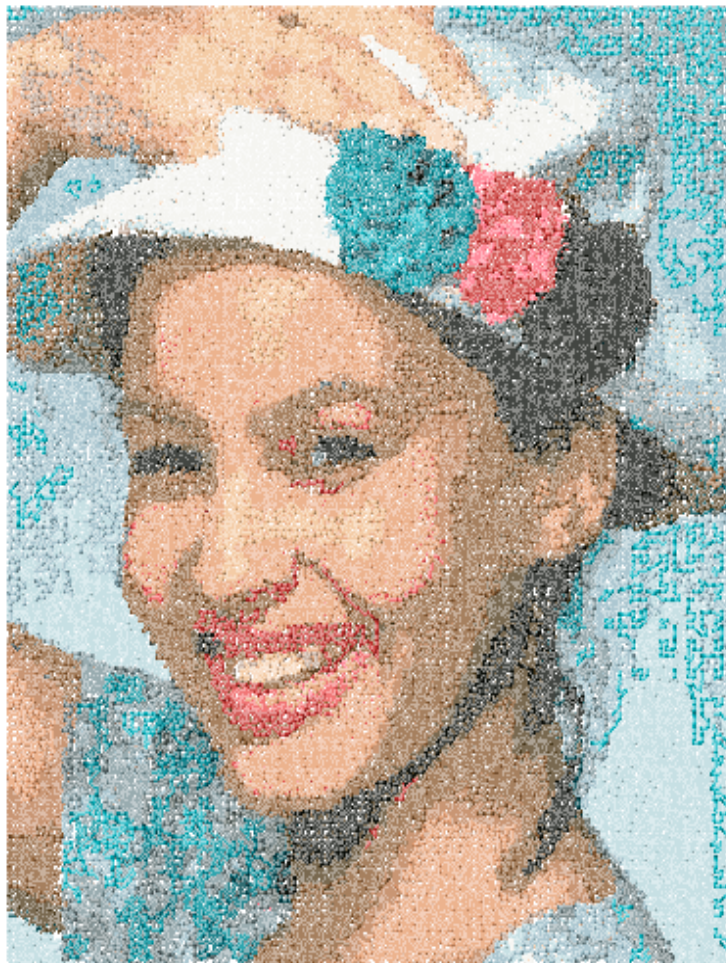
*This step is numbered as 'step 6' when working with rectangular or satin fill type.*



*The 'Preview' button is very useful to display a preview of the design to be generated. Try with different values to get the result that you like.*

*Remember to always check for the stitch count, as the more 'detailed' the result, the higher the stitch count.*





# Inside Scan Image

## Scan Image

**Scan Image** is a function used to **Scan an Image**, or take a “snapshot” of the physical artwork. A scanner must first be installed on your computer. Since each scanner has its own software, the instructions are generalized. You must become familiar with your own scanner and software.

## How to Scan Artwork

Step	Action	Result
>1	Place <b>artwork</b> on the scanner bed.	
>2	Select <b>File/Scan Image</b> .	The window for the scanning software will open.
>3	Select <b>Preview</b> (if available).	The scanner will take a snapshot of your artwork for your approval.
>4	Select <b>Scan</b> .	The scanner will take a snapshot of your artwork employing any options that you selected and bring the image <b>into your screen</b> .



Your Scanner Here

### Tip! for step>3

1. This is your opportunity to crop your artwork to capture the portion that you desire and make desired changes.

2. A **DPI** of 100-150 is sufficient for digitizing **manually**. If “Magic Wand” is to be used, choose a DPI of 200 or more.

### Note

If you want to save an image to the computer, you must scan and save it at the Desktop.

## Inside Draw Package

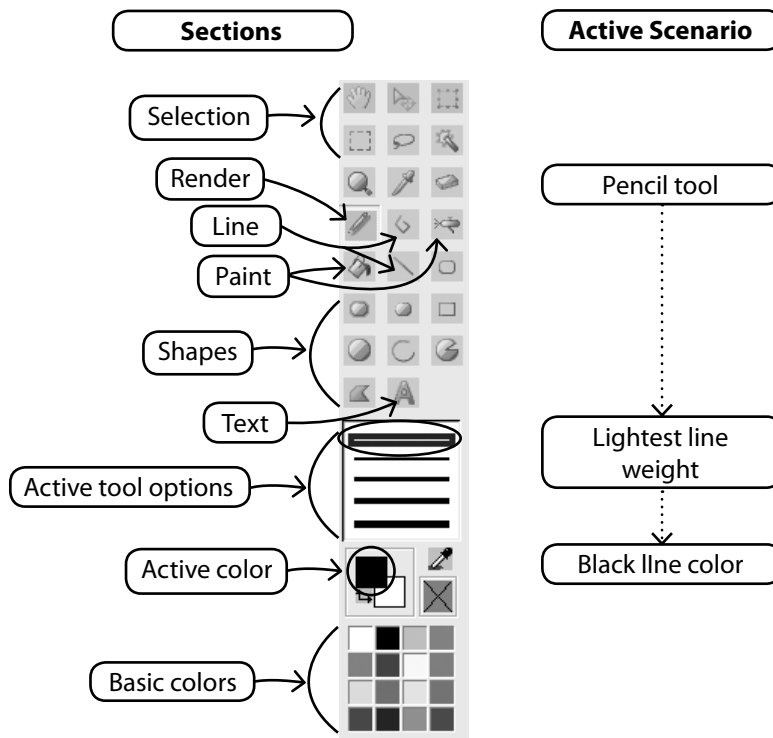
FUTURA has a bitmap drawing package on-board. Create new drawings and modify existing images to be used for embroidery.

### Use Draw Package

Choose "New Bitmap" in the Create drop-down menu. You will be directed to the Draw Package screen after approving or setting the size for the drawing.

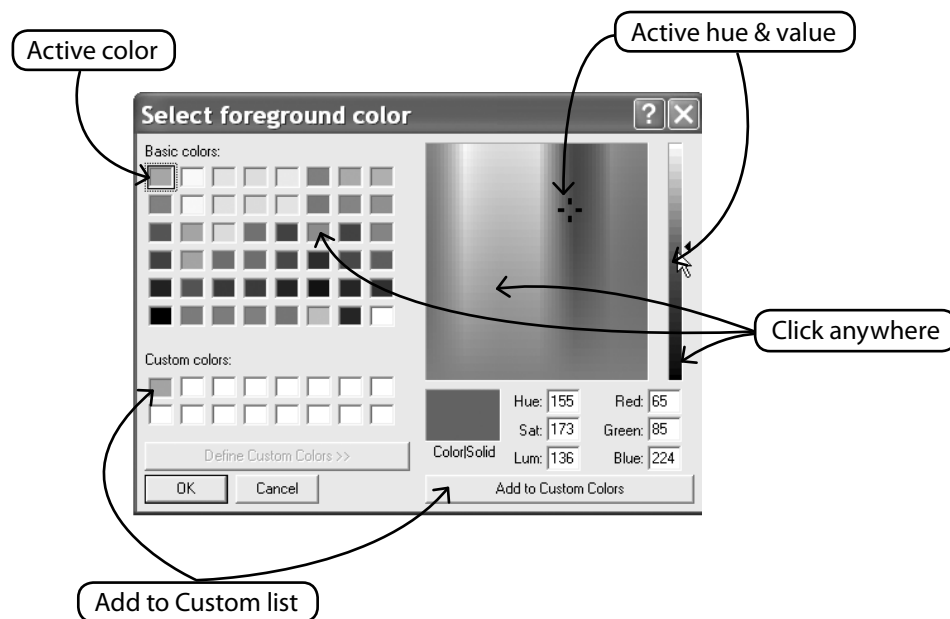
### Main Tool Bar

The tool bar has different sections for drawing needs. Just click on a tool, and draw in the white box.



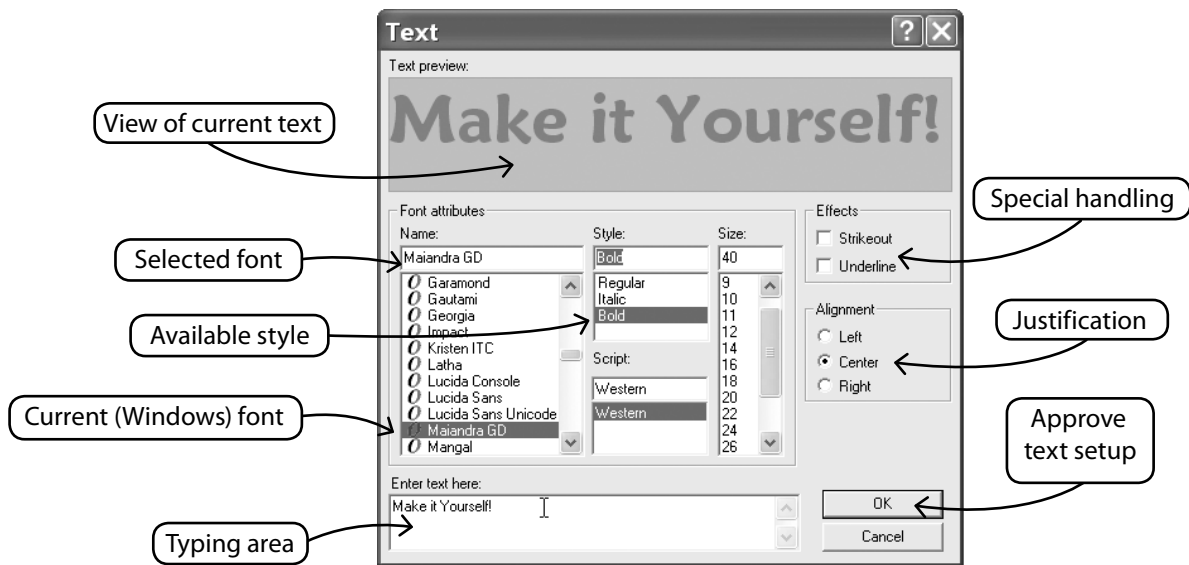
### Change Color

Whether you are about to use a drawing, painting, or text tool, you may need to establish a color for drawing. If there isn't a color in the basic color blocks, double-click the foreground (front) color to open the color palette. Choose a color and value, and save as a Custom color if desired.



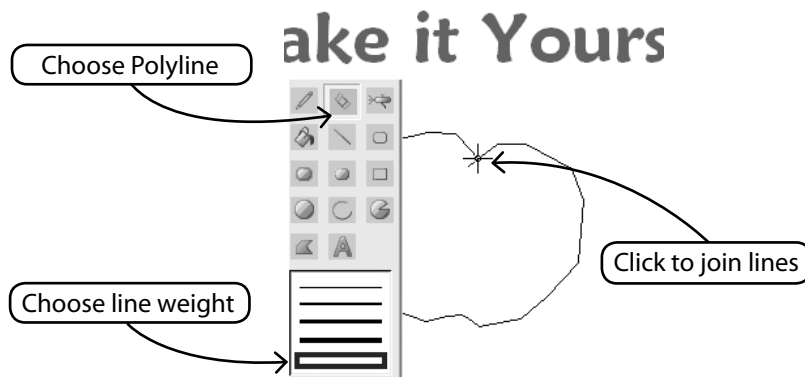
### Create Text

If there is lettering in your logo, create it with the Draw Package. Simply click on the Text icon and follow the dialogue box.



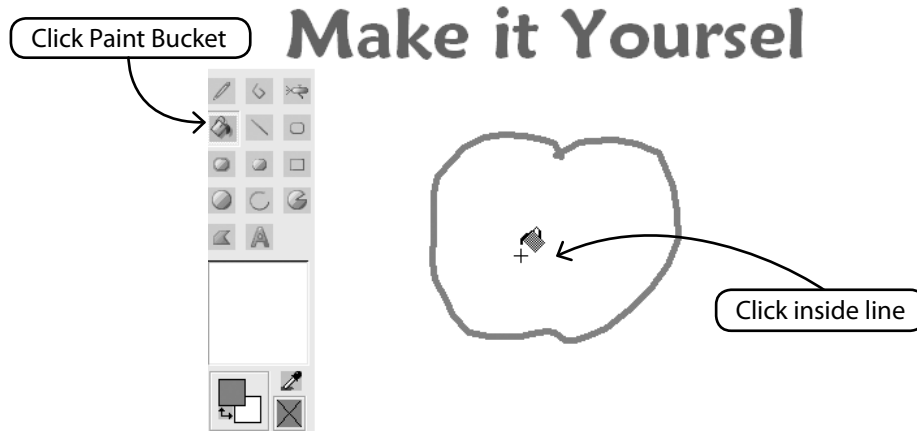
### Draw With Polyline

There is a Pencil and Polyline tool for freehand drawing. Use the Polyline like digitizing with left clicks at short distances (for curves). Simply right-click to complete the line.

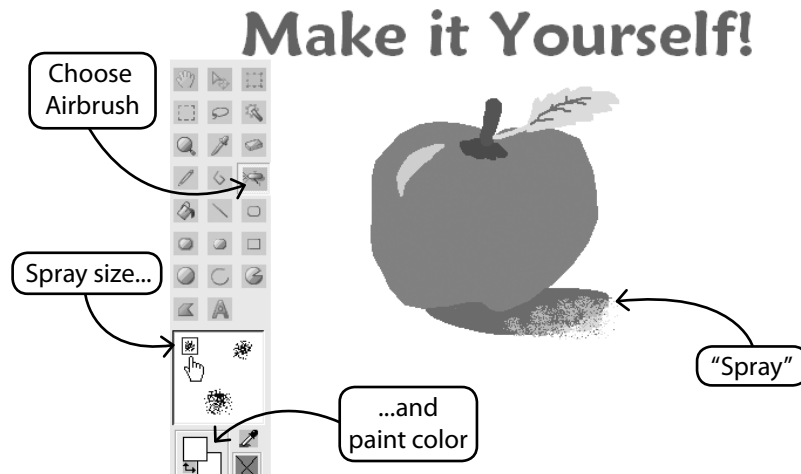


**Fill With Color**

If you close a line, it can be filled with color using the Paint Bucket. Also, make geometric shapes with the different tools.

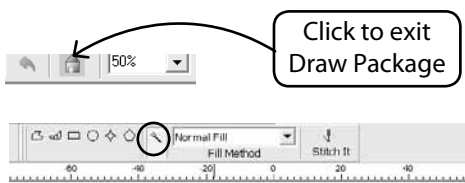
**Continue Drawing**

Use all the different tools and have fun making a new drawing. Use the Airbrush to add sophistication.

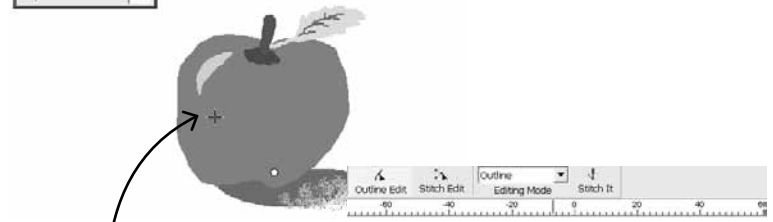


### Use New Drawing

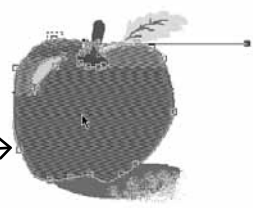
Exit the Draw Package and create embroidery in Stitch & Sew. Use Magic Wand to make easy work of it.



### Make it Yourself!



Choose Magic Wand & click!



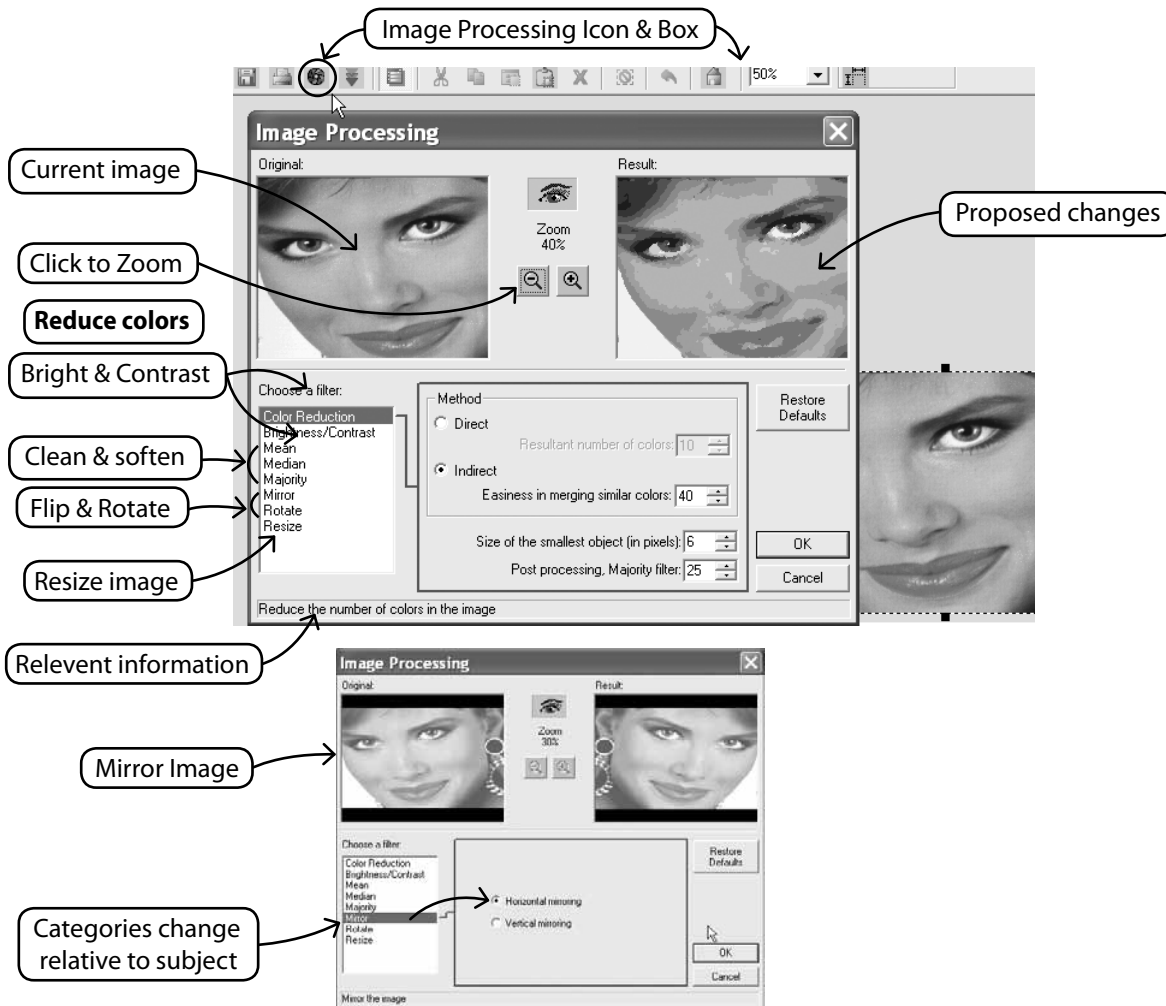
### Modify Existing Images

The Draw Package has a sophisticated Image Processor to enhance images. For example, most images need to have “Brightness & Contrast” adjusted to be a good candidate for PhotoStitch.

### Import Image and Open Draw Package

Choose "Import Image" from the Create drop-down menu. Then choose "Draw Package". Click on the Image Processing icon and choose from a variety of options.

EXPERIMENT for desired results.



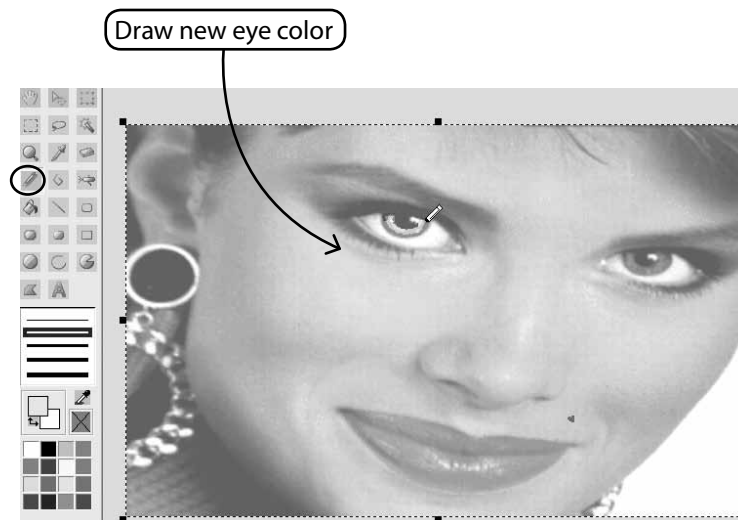


### *Draw on Image, too*

Have you ever had the irresistible urge to paint a moustache on your friend? Now's your chance. Use any of the drawing tools to further enhance the image.



*Enhancing images for PhotoStitch helps to make better quality. For example, draw darker nostrils; thicker eyelashes, lips, and brows; add or erase hair... "Bolder is better" for PhotoStitch!*



## **Inside Show/hide image**

Turn on or off image, as background on the working screen.

