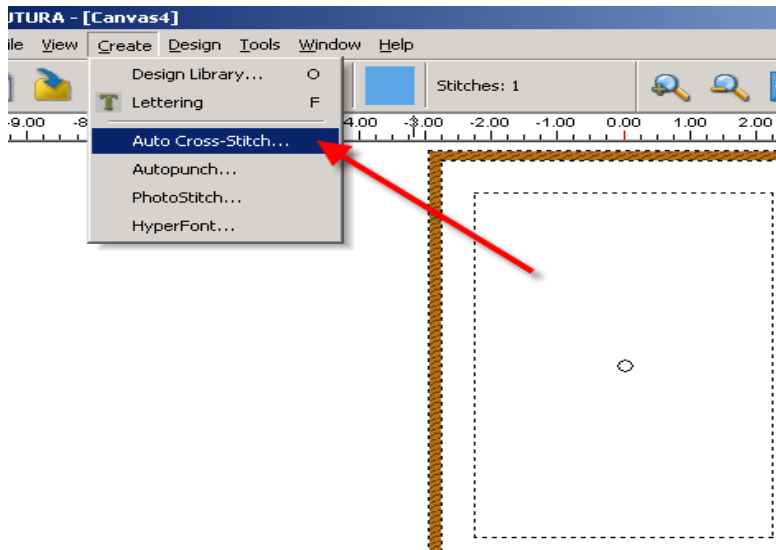
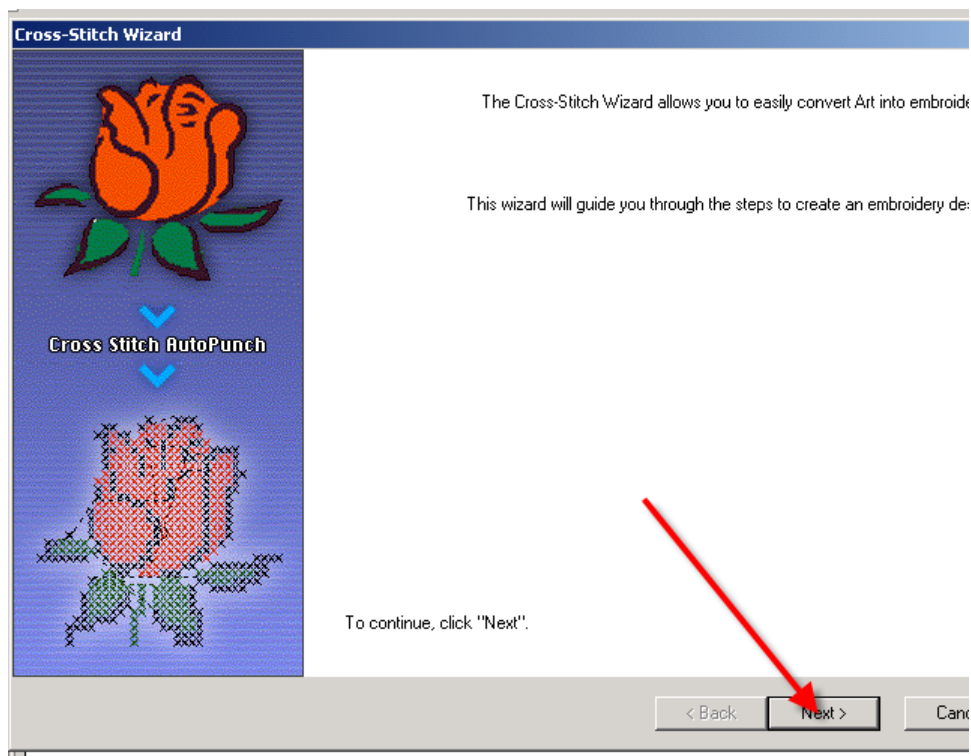


Using SINGER[®] Auto Cross Stitch[™]:

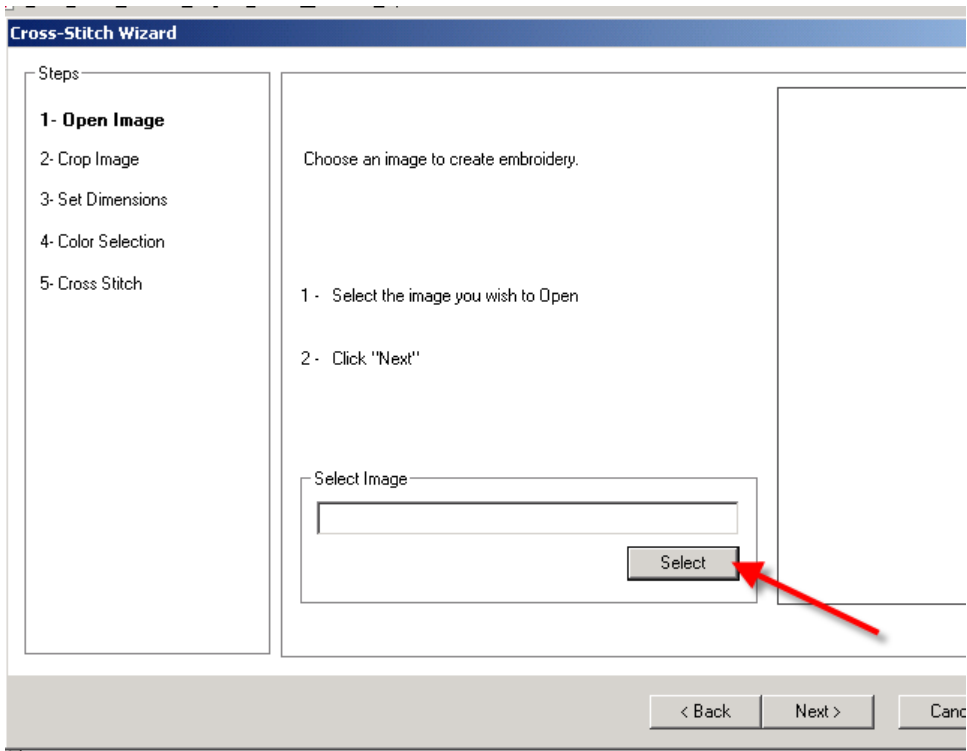
After installing the Auto Cross-Stitch[™] program it will be found in the “Create” Menu on the vertical tool bar.



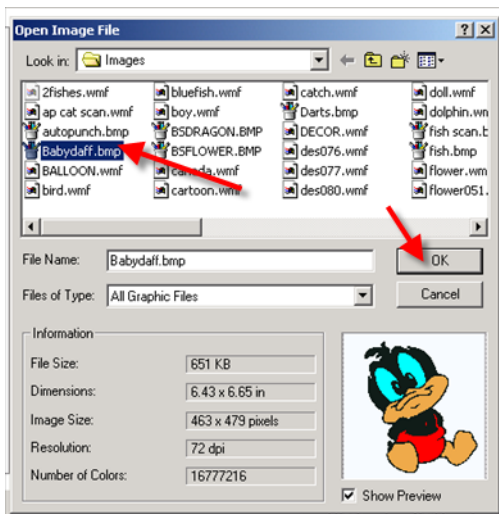
After choosing Cross Stitch – click NEXT on the Wizard screen:



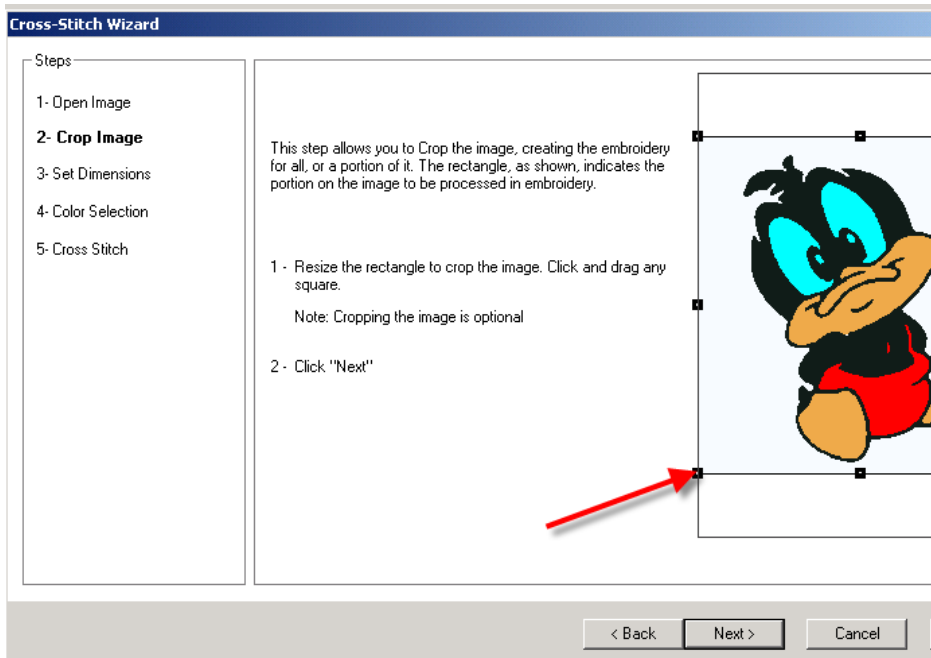
Then select the graphic by clicking on the SELECT:



In the OPEN IMAGE box select the desired graphic file.



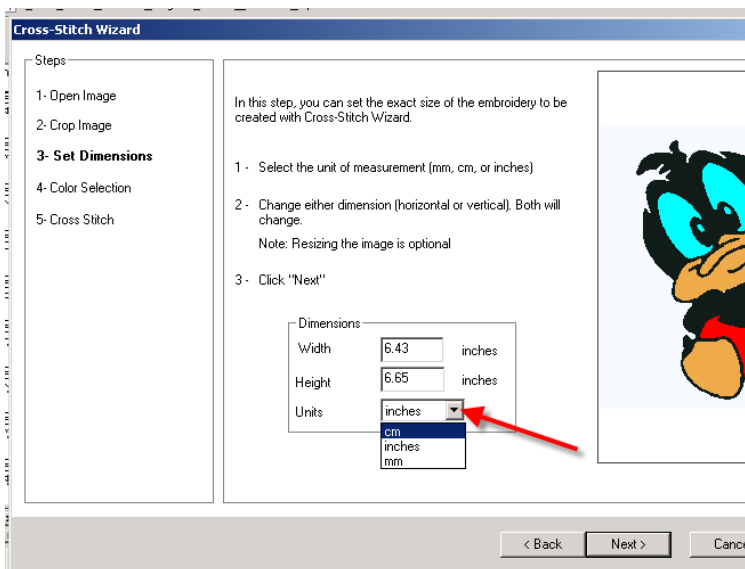
Then click on OK. Then click on NEXT.
Crop Image:



The image may be cropped by clicking and dragging the squares around the image.

Then click on NEXT.

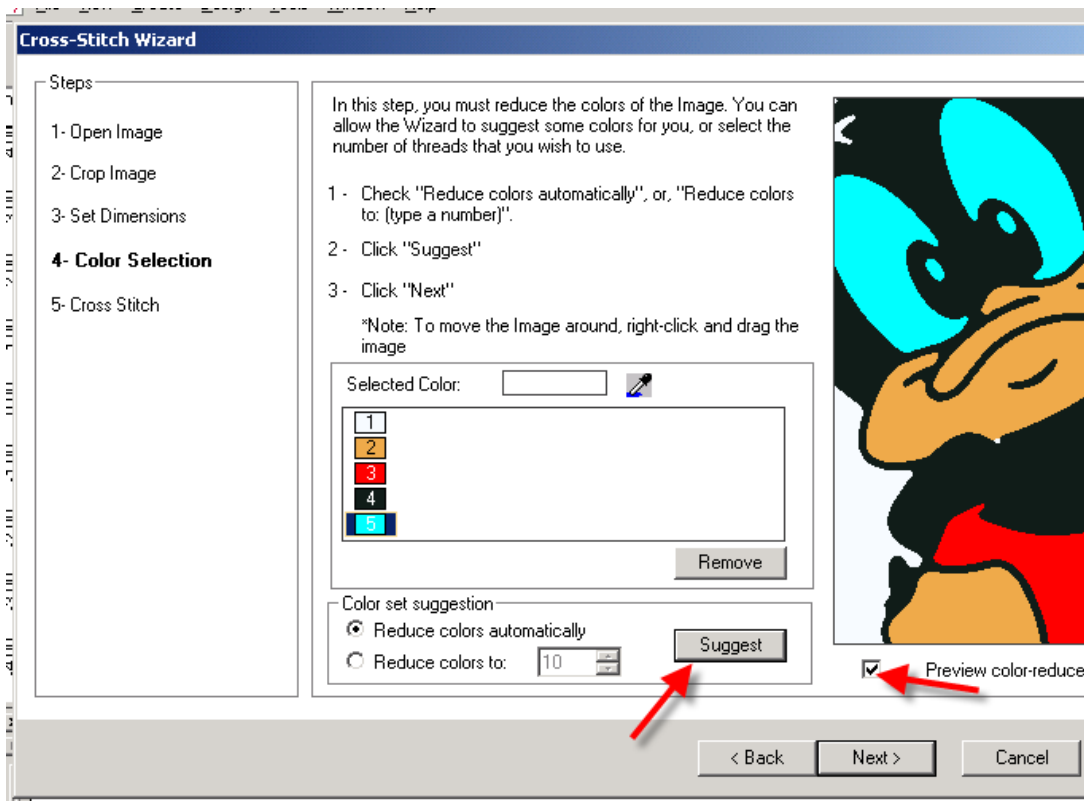
Set Dimensions:



Select the unit measurements and resize the image as necessary.

Then click on NEXT.

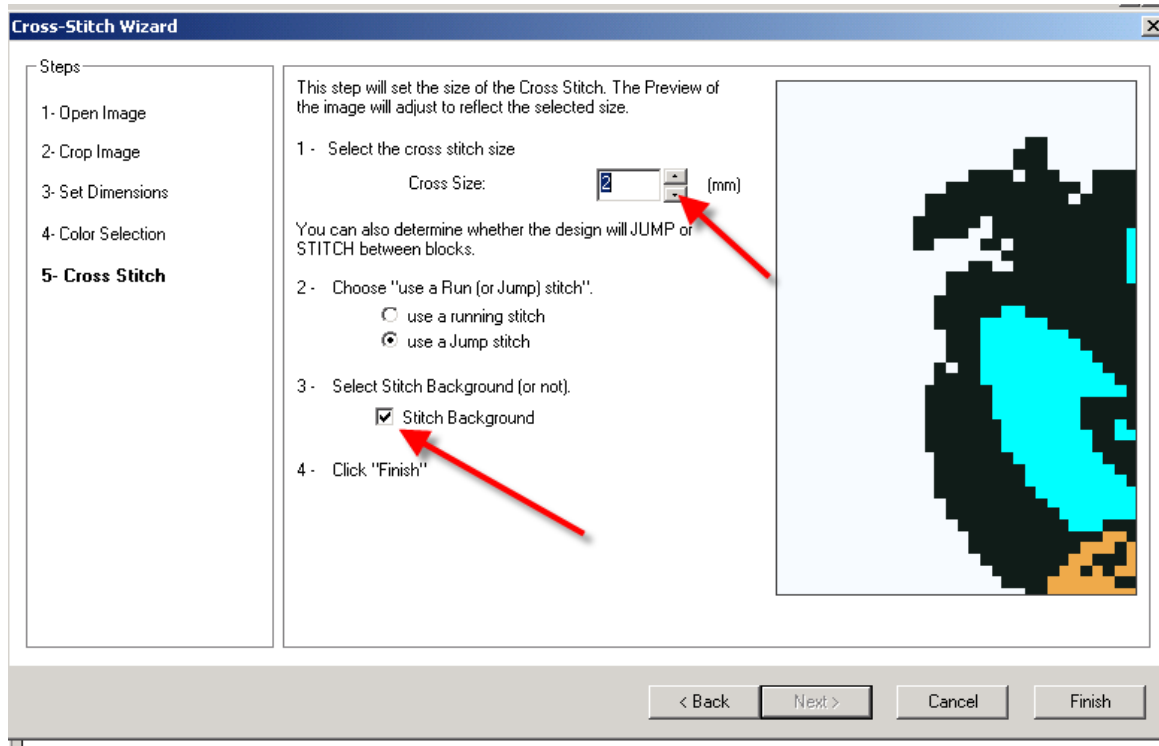
Color Selection:



In this step the program “cleans” up your image. It is important to click on the “Preview Color-Reduction” to see what the image will look like when finished. You can pan around the image by RIGHT clicking in the image and moving the mouse.

Then click on NEXT.

Creating the Actual Stitches:



This screen allows the user to choose the size of the cross stitch and whether you want it to do a jump stitch from one section to the next. You may also choose to stitch or not stitch the background of the design.

Then click "Finish".

SINGER is sewing made easy.™