

## SINGER® FUTURA™ Sewing and Embroidery Machine Embroidered Table Runner



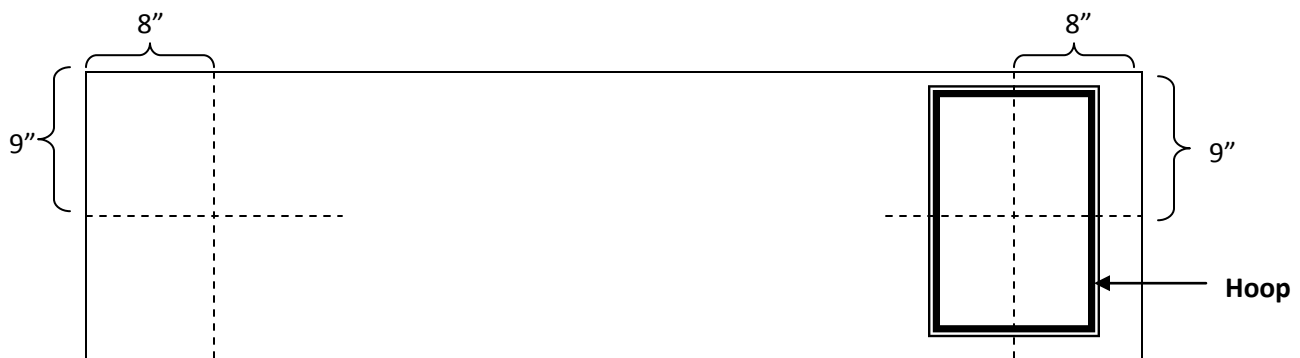
Create this simple, but stylish table runner with the SINGER® Futura™ XL-550 sewing & embroidery machine. Learn fundamental embroidery skills as well as some easy sewing techniques. The approximate finished size of the runner is 13" x 43".

### Shopping List:

- 1 yard fabric
- Machine embroidery threads
- All-purpose thread
- Tear-away stabilizer
- Water soluble fabric marker
- Rotary cutter, mat & ruler
- Hand sewing needle

## Fabric Preparation:

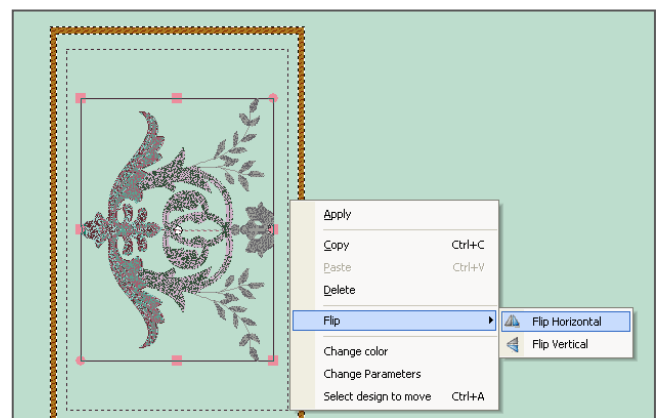
- Cut the fabric as follows:
  - One piece cut 18" x 45" (runner front)
  - One piece cut 13" x 43" (runner back)
- Marking the fabric for embroidery
  - Using a water soluble marker or chalk, mark a line 8" away from each end of the runner front (parallel with edge of fabric).
  - Mark another line 9" from the long edges of the fabric, crossing over the first line.



- Hoop one end of the fabric as shown in the diagram, aligning one set of markings on the fabric with the center marks on the inner hoop. *Note: Place a piece of tear away stabilizer behind the sewing area of the fabric before hooping the fabric.*

## At the Computer:

- Open the Futura Software and Select Design
  - Click on **Create** from the horizontal menu bar
  - Select the **Design Library**
  - Select the **Futura special** category
  - Select **sp\_011**
- Flip the Design
  - Bring the cursor over the upper left corner of the design, click and hold while dragging the cursor down across the entire design, release the mouse. The design is highlighted (in "ghost" form) and can now be manipulated.
  - Right click, select **Flip**, and left click on **Horizontal**.
  - Right Click and left click on **Apply**.

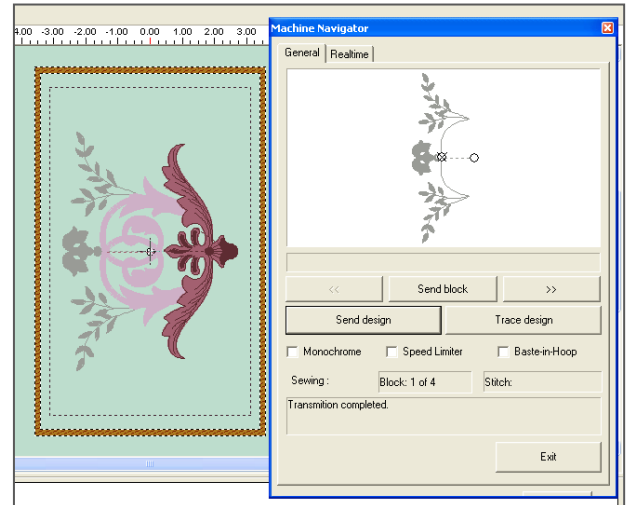


## 6. Send the Design

- Attach the embroidery hoop to the embroidery arm.
- Click on the **Send Design** tool from the Horizontal tool bar.
- Click on **Send Design**. 
- Embroider the design.
- Remove the stabilizer, clip the threads and press.

## 7. Embroider the design on the other end of the runner front using the remaining set of markings.

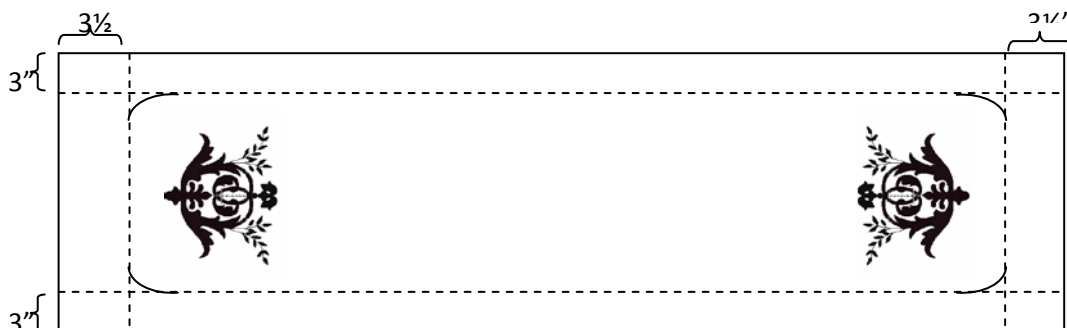
*Note: Depending on how the fabric is hooped, it may be necessary to flip the design on the screen before resending the design to the machine so that the embroidery will be facing the right direction on the fabric.*



## At the Machine:

### 8. Decorative Stitched Border

- Remove the embroidery unit and set the machine for regular sewing mode. Attach the Satin Stitch Foot.
- Using a water soluble marker, mark a line 3" from each long edge of the runner.
- Mark another line 3½" from each end of the runner.
- Round each corner as shown. Place strips of tear away stabilizer underneath the fabric and marked lines



- Satin Stitch: Select stitch #3, the zigzag stitch, width 4.5 and length 0.5. Stitch on the line all the way around the runner, using the rounded markings at the corners.
  - Decorative Stitch: Select stitch #64, width 7.0 and length 0.5. Stitch this pattern inside the satin stitch. For easy sewing, use the edge of the foot as a guide by running the side of the foot next to the satin stitching.
9. Trim the runner front using a rotary cutter and ruler, trimming away the edges of the fabric leaving about 1" from the satin stitching.
10. Runner Construction
- With right sides together, pin the runner front to the runner back.
  - Using all-purpose thread and a straight stitch sew the runner together using a ½" seam and leaving an opening for turning. Clip corners and trim seams.
  - Turn right side out. Press. Slipstitch the opening closed.

---

**Get more sewing and embroidery ideas at [www.singer.com](http://www.singer.com)**

---

**SINGER is sewing made easy.™**