

## SINGER® FUTURA™ Sewing and Embroidery Machine Apple Napkins, Napkin Ring & Placemat



Discover how easy it is to embroider while creating this fun table ensemble. You will learn how to position designs on your projects and embellish with decorative stitches built in to your SINGER® FUTURA™ Sewing and Embroidery Machine.

### Shopping List:

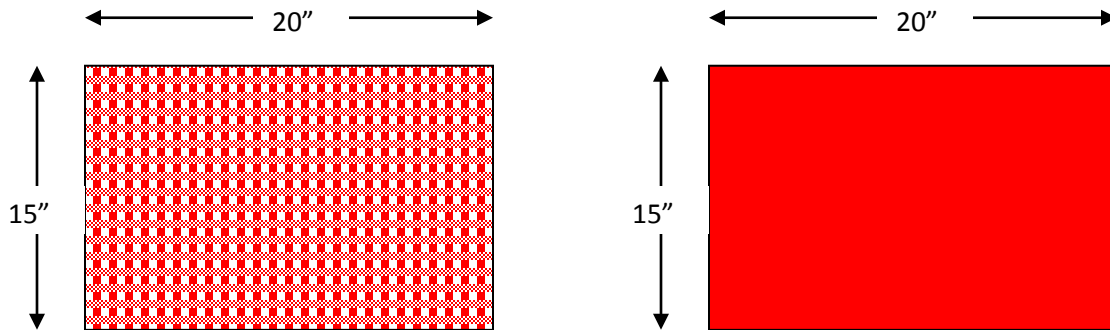
*Makes 2 Napkin Rings & 2 Placemats*

- ½ yard solid cotton (placemat backing and napkin ring)
- ½ yard large check cotton (placemat front)
- ¾ yard solid cotton (napkin)
- ⅛ yard small check cotton (napkin ring)
- One heavy fusible interfacing 15" x 20"
- One tear-away stabilizer 8" x 10"
- Machine embroidery threads
- Bobbin thread
- All-purpose thread for construction
- Water soluble fabric marker
- SINGER® Chromium Embroidery Needles  
(Style 2000, size 14)

## Fabric Preparation:

### Placemat

1. Cut one 15" x 20" piece from the check fabric and also from the solid fabric.
2. Apply the 15" x 20" fusible interfacing to the wrong side of the placemat backing according to the manufacturer's recommendations.



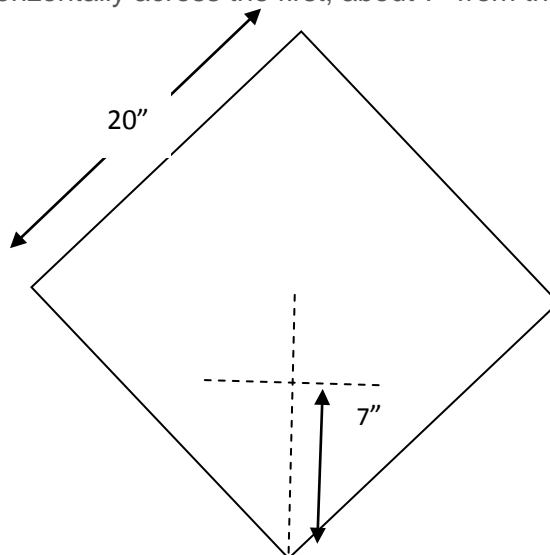
### Napkin Ring

3. Cut a 1½" x 7" strip from the solid fabric (same fabric used for the placemat backing).
4. Cut a 3½" x 7" strip from the small check fabric.



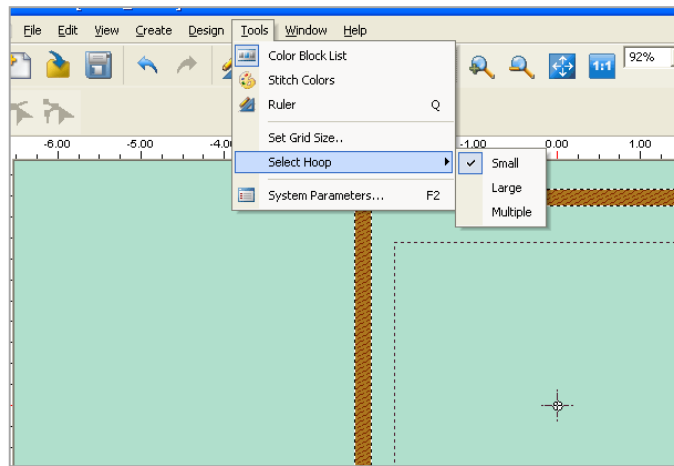
### Napkin

5. Cut a 20" square from the napkin fabric.
6. To mark the position for the embroidery, use a water soluble marker and a ruler. Mark a centered line diagonally up from one of the corners of the fabric square.
7. Mark another line, horizontally across the first, about 7" from the corner.

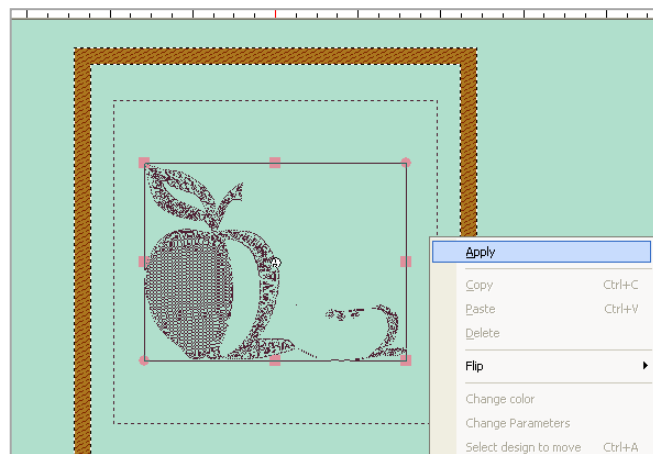


## At the Computer:

8. Before sewing the placemat, napkin ring and napkin, the first step is to embroider the design on the napkin fabric. Set the SINGER® FUTURA™ Sewing and Embroidery Machine to embroidery mode. Connect the USB cable between the machine and the computer. Open the SINGER® FUTURA™ software and then turn on the machine.
9. From the main menu, select **Tools**, and then scroll down to **Select Hoop**. Since the small embroidery hoop will be used to stitch out the design on the napkin, select **Small**.




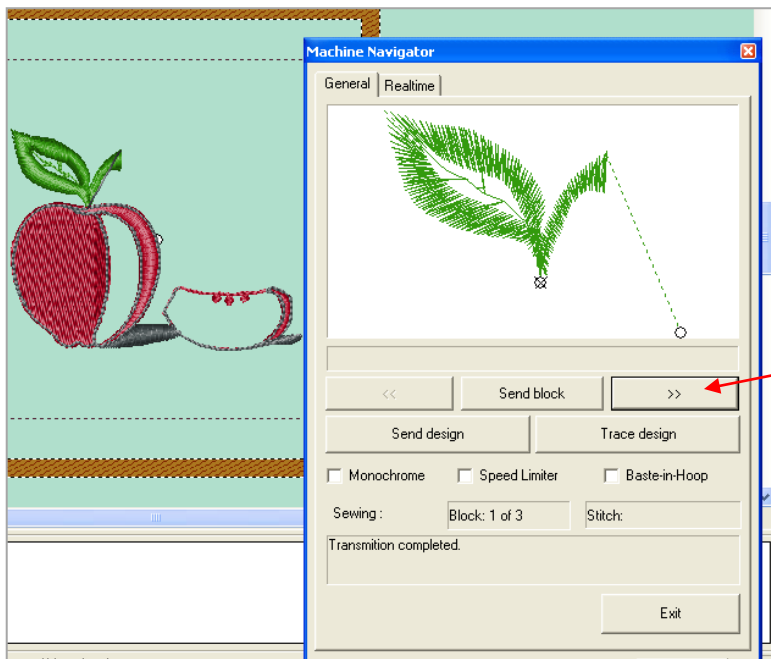
10. From the main menu, select **Create**. Open the **Small hoop library** and scroll down and select the **apple (Fruits\_s003)**.
11. The design appears in the hoop, in “ghost” form. Right click and then click **Apply** in the pop-up, to set the design into the hoop.



12. From the main menu, select **Design** and then scroll down and choose **Center Design**.

## Embroidery:

13. Thread the top of the machine with the first color of machine embroidery thread and bobbin thread in the bobbin.
14. Place the fabric in the small hoop with a tear-away stabilizer underneath. Use the crosslines marked onto the fabric as a guide for correct positioning. Align the cross lines with the center marks on the inner hoop. Attach the hoop to the embroidery arm of the machine.
15. To send the design data to the machine, click on the **Transmit to Machine** icon, located in the main tool bar. 
16. Click on **Send design** in the Machine Navigator box. This will send the entire design data to the machine.



*Tip: While the machine is embroidering, you can see the next color by clicking on these arrows. This will advance through the design one color block at a time.*

17. Embroider the design, changing the colors of thread when the machine stops, advancing to the next color. Continue to embroider until the design is complete.
18. Remove the hoop from the machine. Remove the fabric from the hoop and also remove the excess stabilizer from the back side of the design. Press.

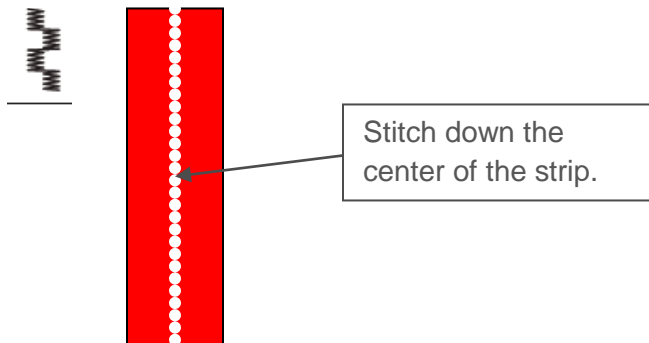
## At the Machine:

### *Napkin*

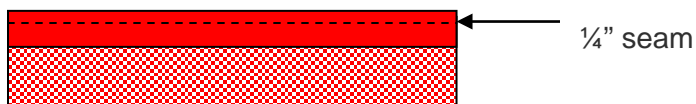
19. Remove the embroidery arm from the machine. Thread the machine with the all-purpose thread in the top and the bobbin. Select a straight stitch.
20. Form a narrow hem around the napkin, by pressing under  $\frac{3}{8}$ " along all four edges of the napkin. Press under again. Topstitch closely to the folded edge.

### *Napkin Ring*

21. Thread the machine with the machine embroidery thread on the top. Attach the Satin stitch foot.
22. Place a piece of tear-away stabilizer underneath the  $1\frac{1}{2}$ " x 7" solid napkin strip.
23. Select a decorative stitch and stitch down the center of the strip. In the sample the checkerboard stitch was selected, but you may choose any stitch that you desire. Remove the stabilizer when finished. Press.



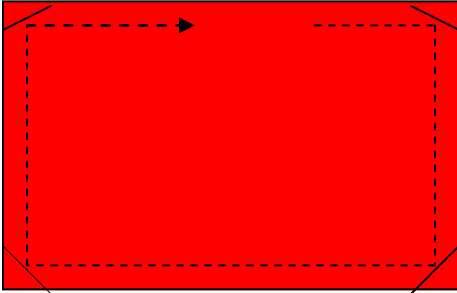
24. Rethread the machine with the all-purpose thread. With right sides together, pin one long edge of the embellished strip to one long edge of the checked napkin ring strip. Stitch using a  $\frac{1}{4}$ " seam. Press seam towards the checked fabric.



25. With right sides together, pin the remaining long edges of the napkin ring strips together, forming a tube. Stitch using a  $\frac{1}{4}$ " seam. Press seam again towards the checked fabric. Turn to the right side out.
26. Press under  $\frac{1}{2}$ " on one end to the wrong side.
27. Slip the end with the raw edge into the end that is folded, to form the napkin ring. Slip stitch edges together.

### ***Placemat***

28. With right sides together, pin the placemat back to the front. Stitch around the edges, using a ½" seam and leaving an opening for turning. Trim corners.



29. Turn right sides out. Press and slipstitch opening closed. Top stitch close to the edges.

**Get more sewing and embroidery ideas at [www.singer.com](http://www.singer.com)**

***SINGER is sewing made easy.™***

SINGER, the Cameo "S" Design, and FUTURA and SINGER is SEWING MADE EASY are exclusive trademarks of The Singer Company Limited S.à r.l. or its Affiliates. © 2011 The Singer Company Limited S.à r.l. or its Affiliates. All rights reserved.