

INSTALLATION OF SOFTWARE

In order to start using the software on your PC you would have to first install the contents of the CD to your PC. This procedure is referred to as “**installation procedure**”. **Please follow the below listed instructions in order to successfully install FUTURA on your personal computer.**

The FUTURA software comes on a CD-ROM disc.

In most personal computers the default drive setting for a CD-ROM drive is “D:”

Please insert the FUTURA CD-ROM into the CD-ROM disc receiver in your PC.

After some seconds, the Installation procedure of the software will start automatically.

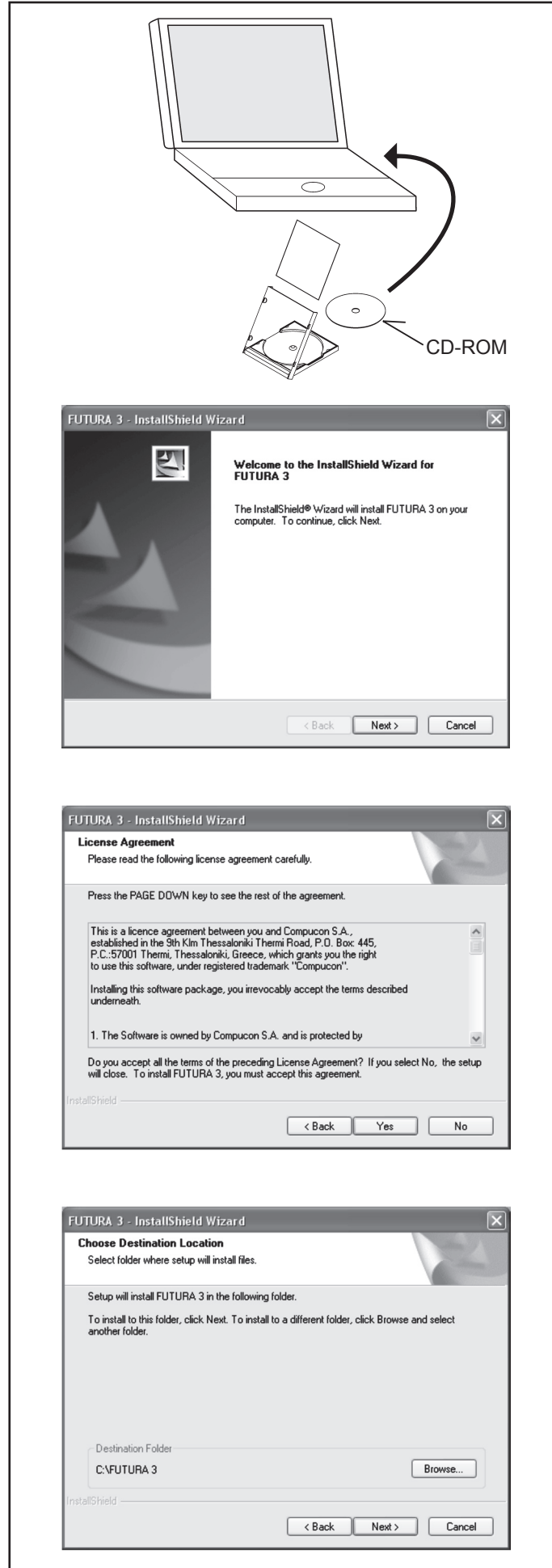
In case this will not occur after a short while, you can run the installation procedure manually by going to the “Start” option of Windows, select “Run”, type “D:\FuturaStart..exe” and click on OK.

After some seconds the step by step installation of the software begins with the Welcome window. You can always abort the installation procedure by clicking on the “**Cancel**” button.

Click on “Next” to move on the next screen.

After reading and agreeing with terms given in the License Agreement, please click on “Yes”, and again click on Next, and then select the directory where the software should be installed. It would be recommended to use the default selected directory.

Simply click on “**Next**” to continue.



Now you are prompted to select the **Program Folder** where the shortcut for the software will be stored.

Simply click on **“Next”** to continue.

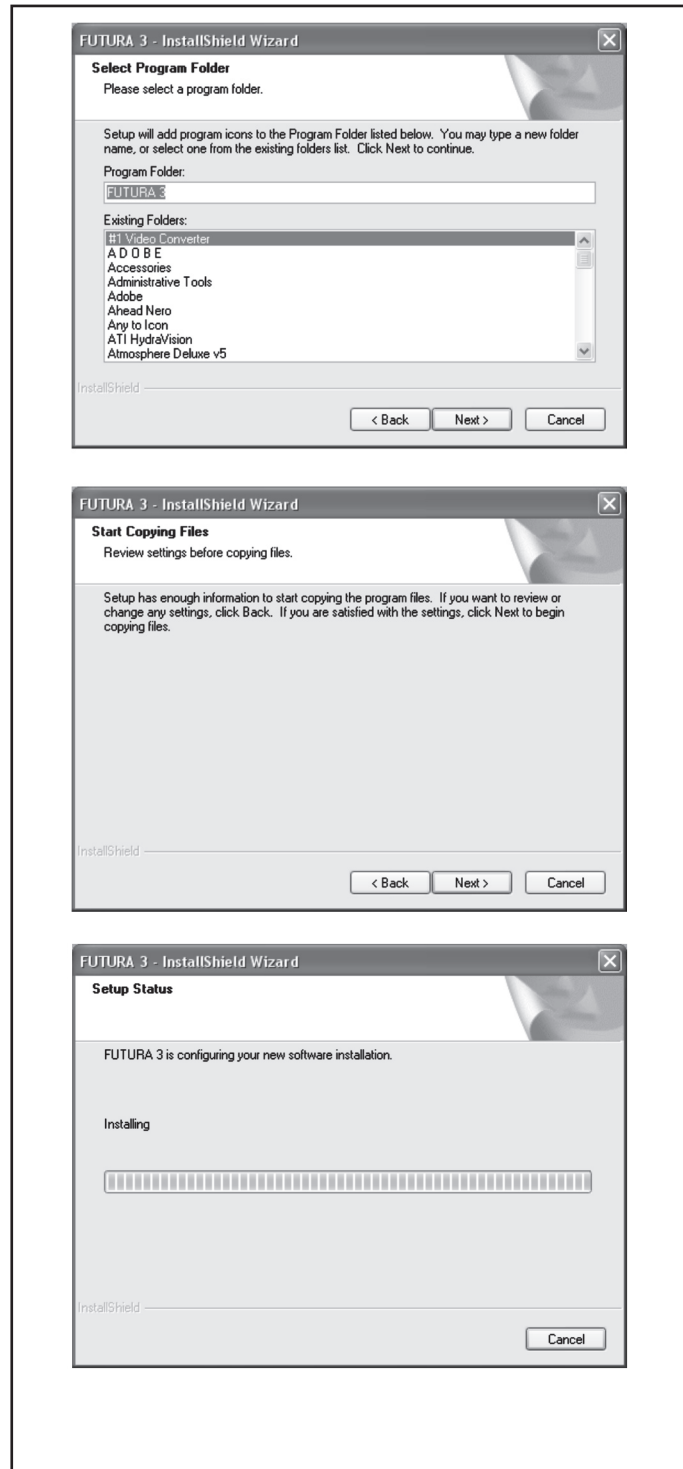
Finally you are requested to confirm all the selections made during the installation set-up.

Pressing the **“Next”** button will finally **start the copy and installation of the FUTURA software files** to the given directory on the hard disk.

A **progress bar** will indicate the stage at which the installation procedure is. It will finish when it has reached to **100%**.

The installation procedure is finalizing all required actions and will automatically close after finish. Please wait for a short while until this happens.

If the installation utility identifies a **lack of available space on your hard disk**, an **error message** will prompt you to free some hard disk space before proceeding with the installation. You can always abort the installation procedure by clicking on **“Cancel”**.



CORRECT START-UP PROCEDURE WHEN EMBROIDERING

The following steps must be followed for proper start-up protocol. If these steps are not followed precisely, you will get a “Transmission Pending” error message.

Boot up your computer, but do not open the Futura software. Next attach the embroidery unit to your sewing machine and connect the USB cable between your computer and sewing machine.

1. Turn on your sewing machine. Make sure the needle has been moved to the highest position by turning the Hand wheel towards you.
2. Attach the hoop that you plan to work with to your embroidery unit.

3. Double click on the Futura Icon on your desktop to open up the Futura Software.
4. You are now ready to select and transmit a design to your machine.

IMPORTANT: If you have embroidered using the small hoop, and you are now ready to use your large hoop. Turn off your machine, close the Futura software and then turn OFF your computer. Wait for a moment, turn on your computer and then follow steps 1 through 4 above.